



Light of the World Foundation

**Prepared By
Galen TeSelle**



We Believe

- **The Gospel Message of Jesus Christ is the only hope for the cities of the world.**
- **Cities are transformed when people are transformed.**
- **People are transformed when they become followers of Jesus Christ.**
- **God transforms people when His church prays for and cares for their neighbors and then shares the Good News of Jesus Christ.**

A lighthouse on a rocky cliff overlooking the ocean at sunset. The lighthouse is white with a black lantern room and a balcony. The sky is a mix of blue and orange, and the ocean is visible in the distance. The foreground shows a white picket fence and some trees.

Vision

- **Every disciple of Jesus Christ living a “lighthouse” lifestyle of prayer, care, and share ... loving their neighbors and making disciples.**

A lighthouse on a rocky cliff overlooking the ocean at dusk. The lighthouse is white with a black lantern room and a balcony. The sky is a mix of blue and orange, suggesting sunset or sunrise. The foreground is a rocky cliffside with some trees and a white picket fence.

Mission

- **Encourage, train, and equip disciples of Jesus Christ to live a Lighthouse lifestyle model of prayer, care, and share.**

The Biblical Charge

- “You are the light of the world ... let your light shine before men, that they may see your good deeds and praise your Father in heaven.” *Matthew 5:14 16*
- “Love your neighbor as yourself.” *Mark 12:31*
- “Go and make disciples of all nations.” *Matthew 28:19*
- “If my people, who are called by my name, will humble themselves and pray and seek my face and turn from their wicked ways, then will I hear from heaven and will forgive their sin and will heal their land. *2 Chronicles 7:14*
- “May they be brought to complete unity to let the world know that you sent me and have loved them even as you have loved me.” *John 17:23*



Key Questions

Are followers of Jesus Christ in our local churches, schools and businesses ...

- Being the light of the world, reflecting the Light of Jesus Christ ... or are we putting it under a bowl?**
- Faithfully carrying out the Great Commandment and the Great Commission; loving our neighbors, sharing our faith, and making disciples ... or are we too busy with other priorities?**
- On our knees before the Lord in humility asking God to forgive our sins and bring healing ... or do we act and look like the world around us, content who we are?**
- In unity within the church and with other Christian churches ... or are we diluted by division?**

Our Strategy

- **Foster and build a city model...**
Turn ON the Light–Bowie in the City of Bowie, Maryland
- **Expand to other cities as God leads**
- **Collaborate with ...**
 - “Loving our Communities to Christ” and “Lighthouse Movement” initiatives supported by Mission America
 - “Lighthouse Report” supported by Campus Crusade for Christ
- **Form coalitions ...** with Christian churches, Christian schools, and other ministries

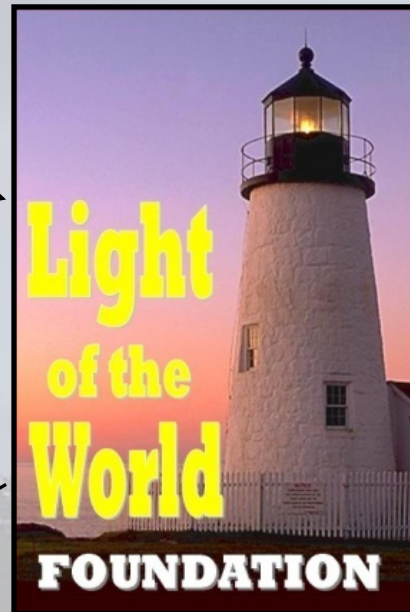
Our Strategy

- **Form partnerships**
 - ... with Christian businesses and city government
- **Provide prayer-care-share materials**
 - ... to churches, schools, and business leaders
- **Share testimonies**
 - ... about how God is moving to bring about brokenness, repentance, reconciliation, healing, and transformation
- **Stay in prayer**
 - ... asking the Holy Spirit to lead this initiative; hear and follow His leading

Organization

**Board of Directors
Leadership**

**Private Individual,
Corporate, and
Church
Sponsorship**



**Loving our Communities
to Christ (LC2C)
My City**



**Turn ON the LIGHT
My City**

Leadership

- **President of Light of the World Foundation and Executive Director of Turn ON the LIGHT- Bowie – Gale TeSelle**
- **Prayer and Prayer Walk Ministries Leader – Tom Knorr**
- **Care and Compassion Ministries Leader -**
- **Share and Evangelism Ministries Leader -**
- **Education and Communications Leader – Al Goff**

- **Board of Directors – Nine members**
 - 3 Community pastors
 - 3 Business leaders – **Bob Gilgunn**
 - School principal
 - City official
 - At large members – **Bill Hall & KC White**

Building Lighthouses

Three essential building blocks ... for hearts to change and cities to transform

What brings us to our knees?

Prayer

How does God's light shine through us?

Care

Expressions of God's love that create light.

"You are the light of the world"
Matthew 5:14

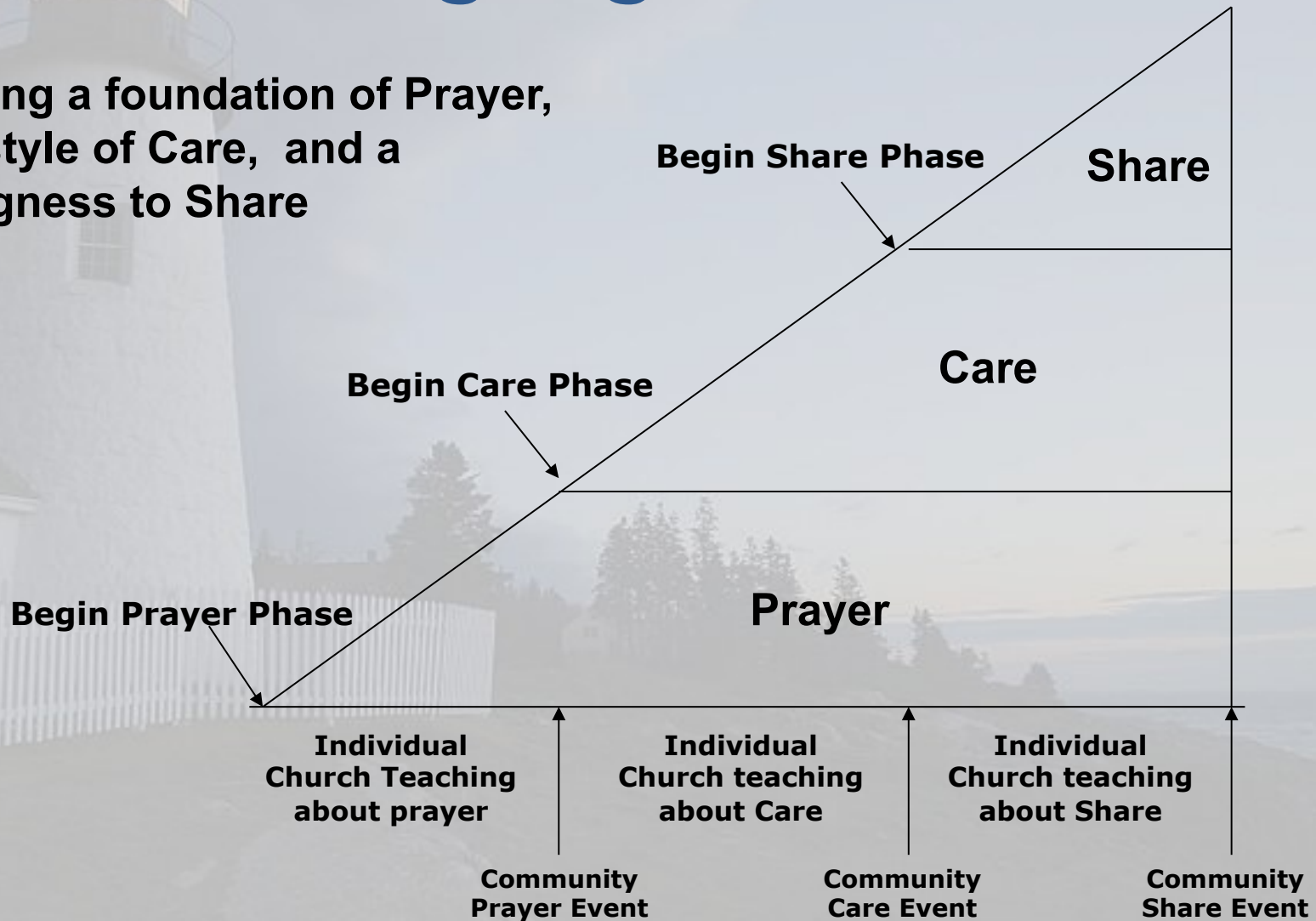
Share

"How shall they hear?"
Romans 10:1

"Go make disciples of all nations"
Matthew 28:19

Building Lighthouses

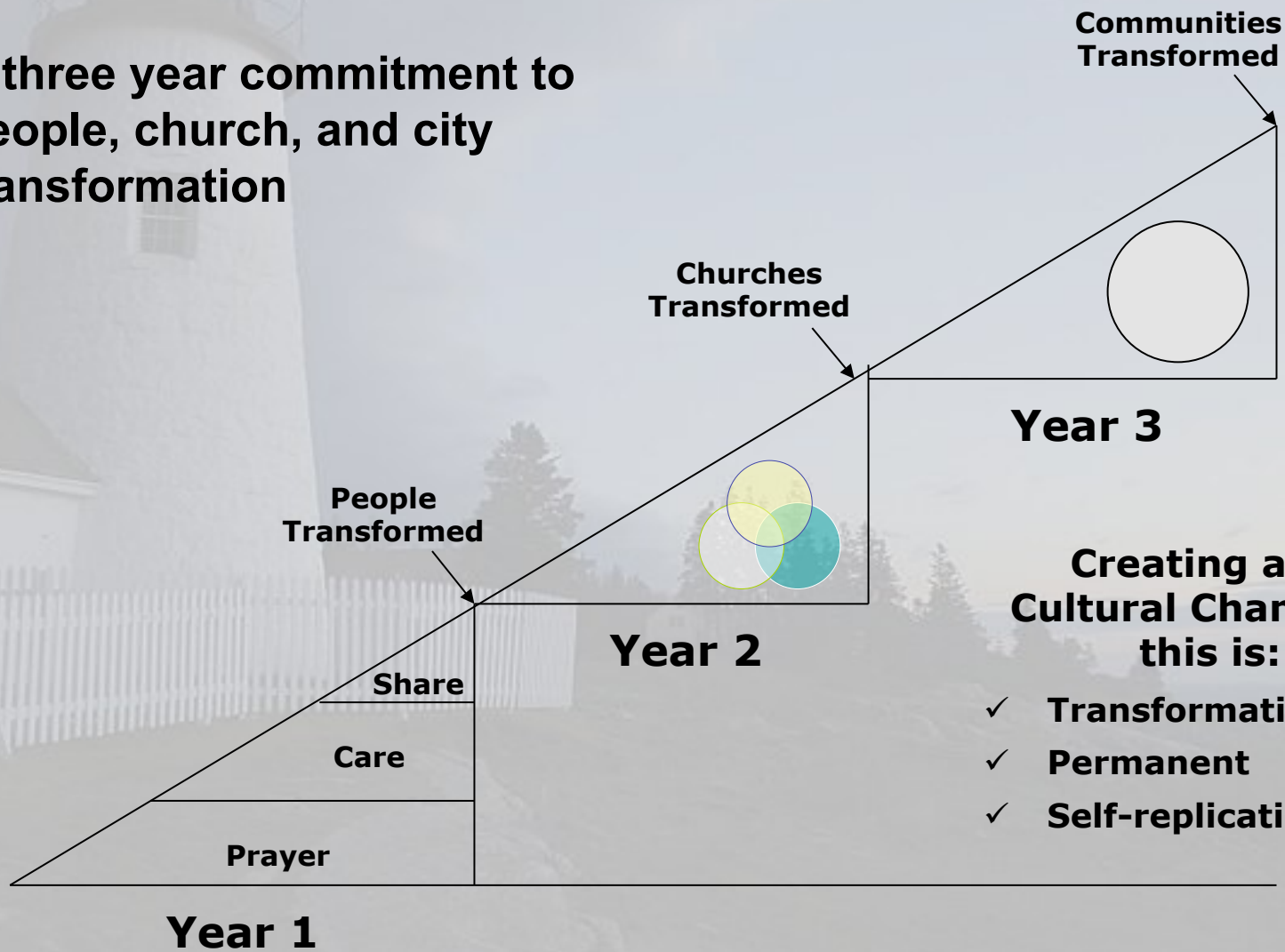
Building a foundation of Prayer,
a lifestyle of Care, and a
willingness to Share



Adapted from Mission America's Loving our Communities to Christ

Building Lighthouses

A three year commitment to people, church, and city transformation



Adapted from Mission America's Loving our Communities to Christ

Turn ON the LIGHT -*Bowie*

ACTION PLAN

- **Bowie Prayer Walk** – Kick-Off the annual Bowie Prayer Walk April to October. Distribute bookmarks to homes and encourage residences who are believers to join the Prayer Walk.
- **Lighthouses of Prayer-Care-Share** – Develop and send an Email Newsletter, develop a “Becoming A Lighthouse” Workbook and offer discipleship classes, and develop and implement a Google Earth display locating confirmed lighthouses
- **Events** – Organize several multi-church events including: Bowie National Day of Prayer, Charity Golf Tournament, Bowie Street Reach, and the Man on Fire Seminar

Turn ON the LIGHT -*Bowie*

ACTION PLAN ... continued:

- **Bowie Pastor's Forum** – Establish a Forum for Pastors in the Bowie area which facilitates prayer and joint planning of community outreach
- **Bowie Christian Business Owners** – Form a chapter of CBMC International in Bowie
- **Leadership Team** – Fill various leadership positions in the Turn ON the Light-Bowie organization
- **Partnerships** – Pursue partnerships with organizations such as the Bowie Crofton Pregnancy Clinic, Kingdom Investors, Mid-Atlantic Cancer Support Center, the Fellowship of Christian Athletes, and Bowie Young Life.

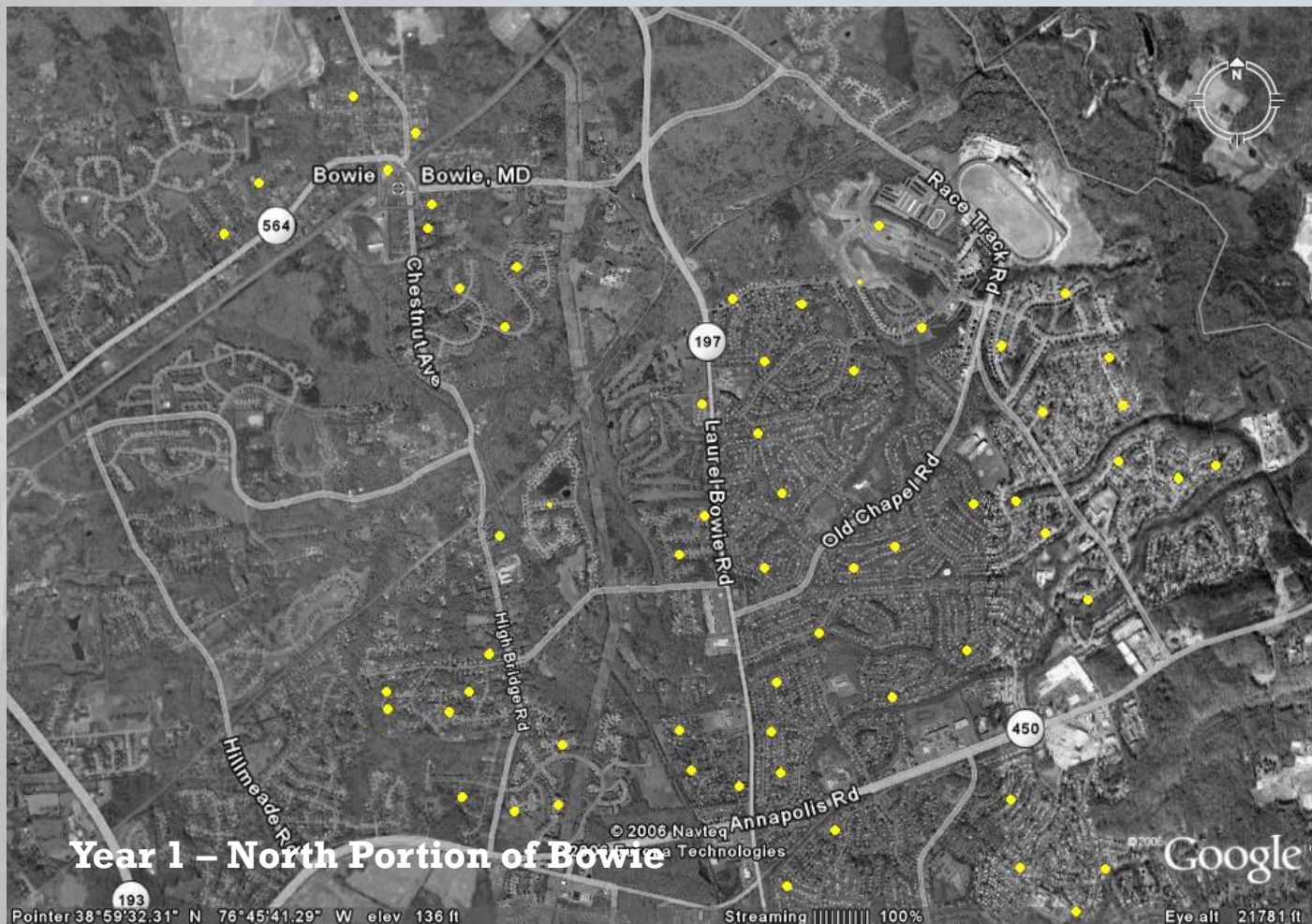
The City of Bowie has

... many Christians living in each neighborhood



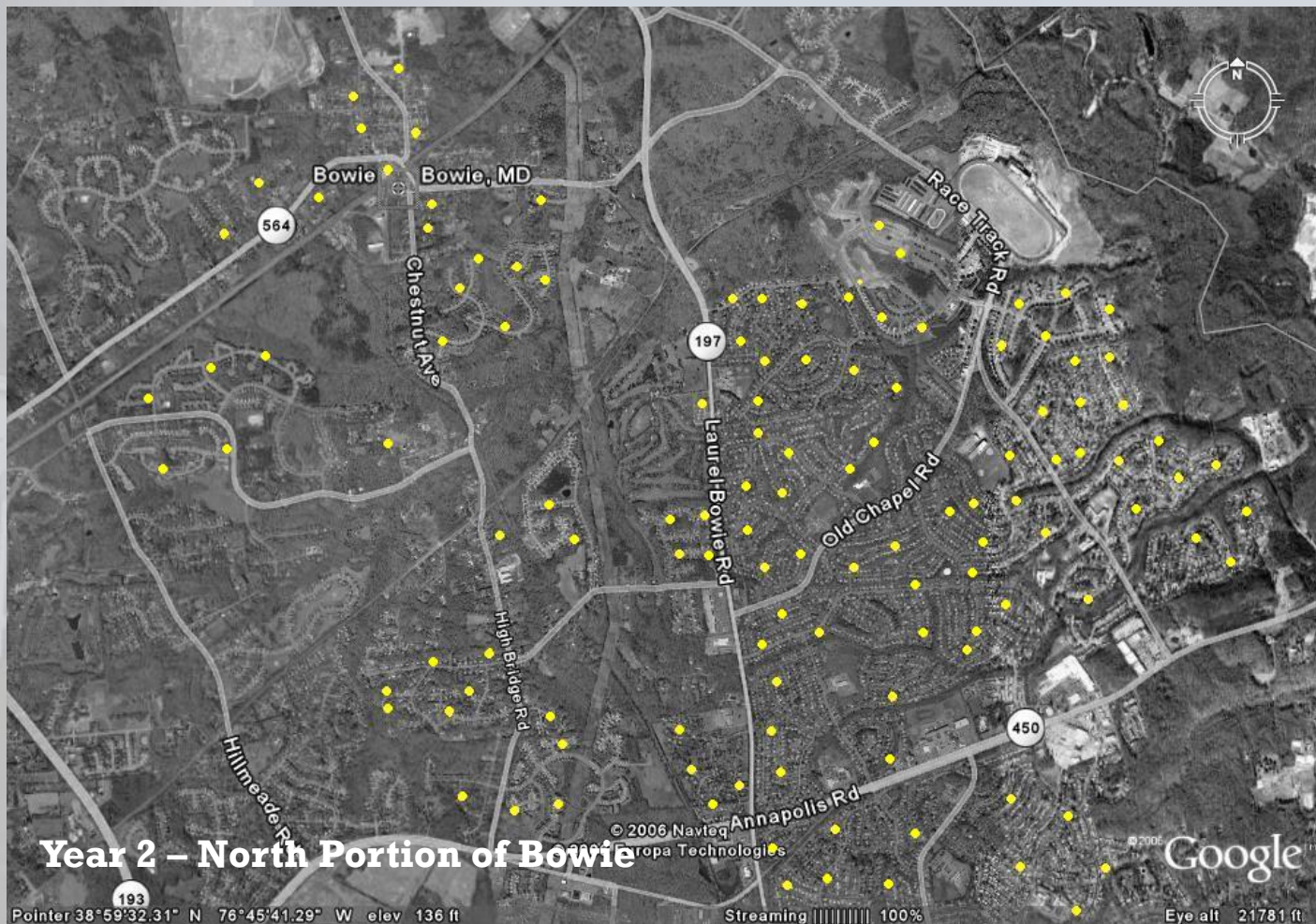
Can You Imagine a City

... where every week new Christian Lighthouses of Prayer-Care-Share are being built in each neighborhood.



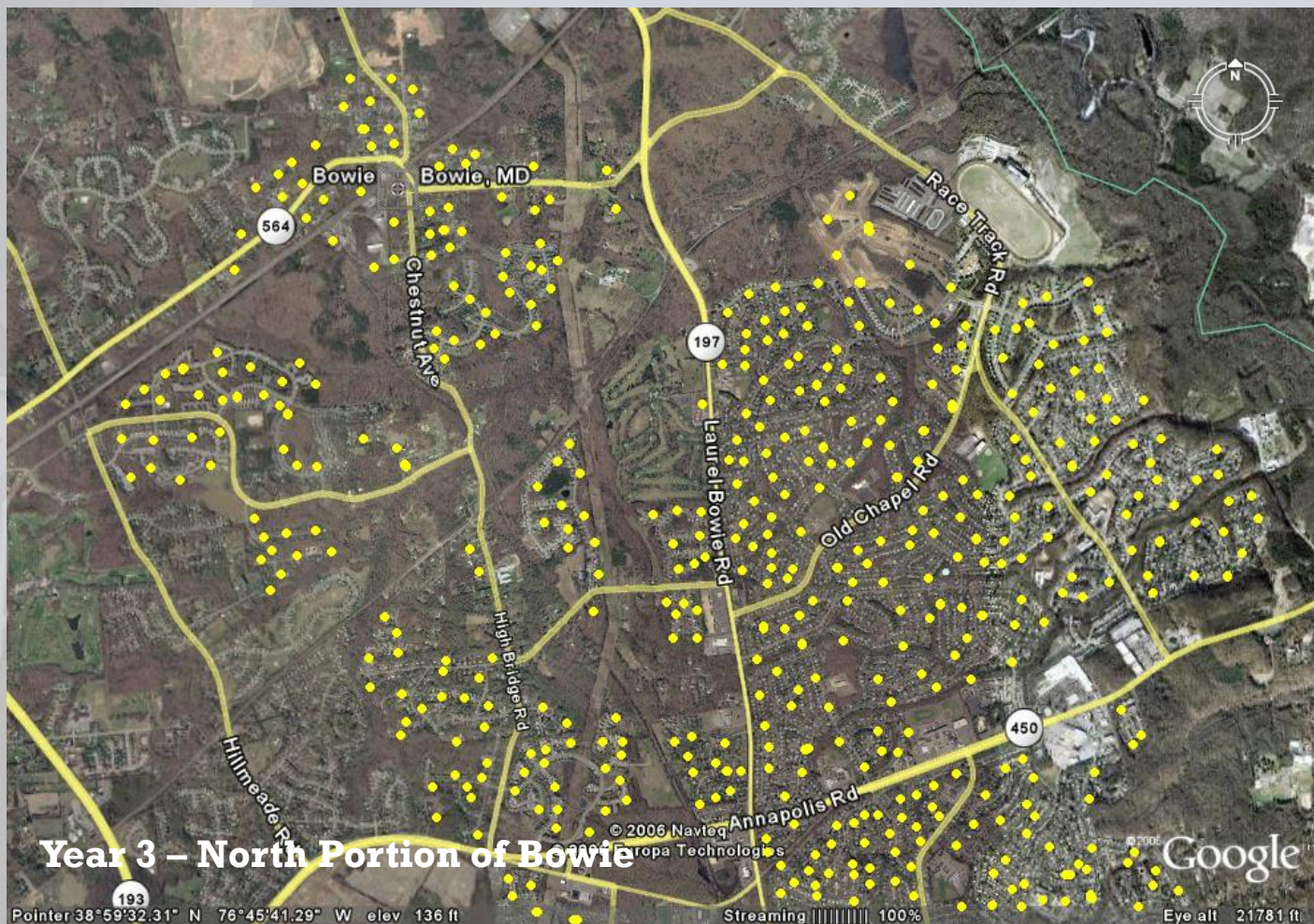
Can You Imagine a City

... where every week new Lighthouses Turn ON the LIGHT for the neighborhoods to see their good deeds and praise our Father in heaven



Can You Imagine a City

... full of Christians and committed Lighthouses, letting their lights shine on one person, one street, one neighborhood at a time until the whole city is transformed?



A lighthouse on a cliff overlooking the ocean, with a white picket fence in the foreground.

Light of the World Foundation

When it comes to revival, we are often waiting for God to show up and do the miraculous while God is waiting for us to show up and do the obvious.

From Jim Montgomery's book "I'm Gonna Let It Shine"